



DANYCATECH

LA MARCA DE LOS CAMPEONES

CATALOGO

2026



DANYCATECH

**SERIE
STRONG**



SERIE STRONG

BAL-BT



**4-24S 4A
SMART ACTIVE BALANCER**

BAL LED-4S



**4S-5A ACTIVE BALANCER
WITH DISPLAY FOR LTO
BATERY**

BAL LED-6S



**6S-5A ACTIVE BALANCER
WITH DISPLAY FOR LTO
BATERY**



SERIE STRONG

BAL-4S



**BALANCEADOR
4S**

BAL-6S



**BALANCEADOR
6S**

CH18V10A



**CARGADOR LTO
18V
10 AMP/HR**



SERIE STRONG

CH18V20A



**CARGADOR LTO
18V
20 AMP/HR**

LIFEPO4-50



**CELDAS LIFEPO4
4 CELDAS
50 AMP/HR
3.2V C/CELDA**

LTO-40AMP



**CELDAS LTO
6 CELDAS
40 AMP/HR
2.3V/CELDA**



SERIE STRONG

LTO-45AMP



**CELDAS LTO
6 CELDAS
45 AMP/HR
2.3V/CELDA**

YEE-2M1F



**YEE RCA 100% COBRE
BLINDADA
PUNTAS
DESMONTABLES**

YEE-1M2F



**YEE RCA 100% COBRE
BLINDADA
PUNTAS
DESMONTABLES**



SERIE STRONG

NUJEVO

OFC-0 GRAY



**CABLE NUM 0
100% COBRE
ROLLO 15 MTS
COLOR GRIS**

OFC-4 GRAY



**CABLE NUM 4
100% COBRE
ROLLO 30 MTS
COLOR GRAY**



SERIE STRONG

RCA-6FT



**RCA 6FT/2MTS
100% COBRE
BLINDADA
PUNTAS
DESMONTABLES**

RCA-17FT



**RCA 17FT/5MTS
100% COBRE
BLINDADA
PUNTAS
DESMONTABLES**

ST-71232



**PANTALLA 7"
MOTOR 1 DIN
CAR PLAY
2/32GB
1080 HD
ANDROID**



SERIE STRONG

ST-91232



**PANTALLA 9"
MOTOR 1 DIN
CAR PLAY
2/32GB
1080HD
ANDROID**

ST-FL10150-S4



**10 INCH
150RMS
300 WATTS MAX
SINGLE 4 OHM
MAGNET FERRITE 44 OZ
VOICE COIL 2 INCH**

ST-FL10150-D2



**10 INCH
150RMS
300 WATTS MAX
DOUBLE 2 OHM
MAGNET FERRITE 44 OZ
VOICE COIL 2 INCH**



SERIE STRONG

ST-810 02-PRO



**10 INCH
1200 RMS
2400 WATTS MAX
DOUBLE 2 OHM
MAGNET FERRITE
VOICE COIL 3 INCH**

ST-810 04-PRO



**10 INCH
1200 RMS
2400 WATTS MAX
DOUBLE 4 OHM
MAGNET FERRITE
VOICE COIL 3 INCH**

ST-2010 01-PRO



**10 INCH
2000 RMS
4000 WATTS MAX
DOUBLE 1 OHM
MAGNET 300 OZ
VOICE COIL 3 INCH**



SERIE STRONG

ST-2010 D2-PRO



**10 INCH
2000 RMS
4000 WATTS MAX
DOUBLE 2 OHM
MAGNET 300 OZ
VOICE COIL 3 INCH**

ST-FL12150-D2



**12 INCH
150 RMS
300 WATTS MAX
DOUBLE 2 OHM
MAGNET 44 OZ
VOICE COIL 2 INCH**

ST-FL12150-D4



**12 INCH
150 RMS
300 WATTS MAX
DOUBLE 4 OHM
MAGNET 44 OZ
VOICE COIL 2 INCH**



SERIE STRONG

ST-812-02



**12 INCH
800 RMS
1600 WATTS MAX
DOUBLE 2 OHM
MAGNET 150 OZ
VOICE COIL 3 INCH**

ST-812-04



**12 INCH
800 RMS
1600 WATTS MAX
DOUBLE 4 OHM
MAGNET 150 OZ
VOICE COIL 3 INCH**

ST-812 02-PRO



**12 INCH
1200 RMS
2400 WATTS MAX
DOUBLE 2 OHM
MAGNET 190 OZ
VOICE COIL 3 INCH**



SERIE STRONG

ST-812 04-PRO



**12 INCH
1200 RMS
2400 WATTS MAX
DOUBLE 4 OHM
MAGNET 190 OZ
VOICE COIL 3 INCH**

NEW

ST-2012 01



**12 INCH
2000 RMS
4000 WATTS MAX
DOUBLE 1 OHM
MAGNET 300 OZ
VOICE COIL 3 INCH**

ST-3012 01



**12 INCH
3000 RMS
6000 WATTS MAX
DOUBLE 1 OHM
MAGNET 405 OZ
VOICE COIL 4 INCH**

ST-5012 01



**12 INCH
5000 RMS
10.000 WATTS MAX
DOUBLE 1 OHM
MAGNET 504 OZ
VOICE COIL 4 INCH**



SERIE STRONG

ST-815-02



**15 INCH
800 RMS
1600 WATTS MAX
DOUBLE 2 OHM
MAGNET 150 OZ
VOICE COIL 3 INCH**

ST-815-04



**15 INCH
800 RMS
1600 WATTS MAX
DOUBLE 4 OHM
MAGNET 150 OZ
VOICE COIL 3 INCH**

ST-1515-02



**15 INCH
1500 RMS
3000 WATTS MAX
DOUBLE 2 OHM
MAGNET 240 OZ
VOICE COIL 3 INCH**



SERIE STRONG

ST-1515-04



**15 INCH
1500 RMS
3000 WATTS MAX
DOUBLE 4 OHM
MAGNET 240 OZ
VOICE COIL 3 INCH**

ST-3015-01



**15 INCH
3000 RMS
6.000 WATTS MAX
DOUBLE 1 OHM
MAGNET 402 OZ
VOICE COIL 4 INCH**

ST-5015-01



**15 INCH
5000 RMS
10.000 WATTS MAX
DOUBLE 1 OHM
MAGNET 504 OZ
VOICE COIL 4 INCH**



SERIE STRONG

ST-3018-01



**18 INCH
3000 RMS
6000 WATTS MAX
DOUBLE 1 OHM
MAGNET 402 OZ
VOICE COIL 4 INCH**

ST-3018-02



**18 INCH
3000 RMS
6000 WATTS MAX
DOUBLE 2 OHM
MAGNET 402 OZ
VOICE COIL 4 INCH**

ST-5018-01



**18 INCH
5000 RMS
10.000 WATTS MAX
DOUBLE 1 OHM
MAGNET NEO
VOICE COIL 4 INCH**



SERIE STRONG

ST-400.1



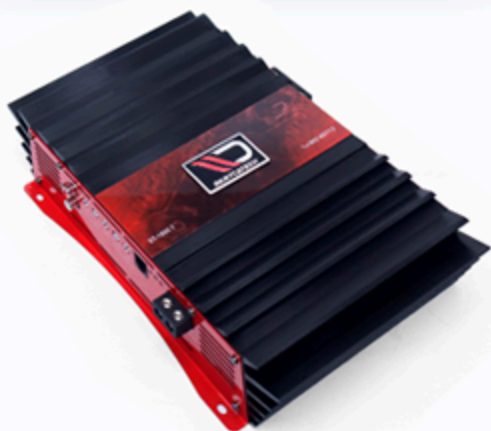
**400 RMS AT 12,5V 1 OHM
1 OHM STABLE LOAD
BASS BOOST:0-12DB
VOLTAGE:9-12V
LOW HIGH PASS FILTER
FULL RANGE AMPLIFIER**

ST-400.4



**100 RMS X 4CH
AT 12,5V 2 OHM
2 OHM STABLE LOAD
BASS BOOST:0-12DB
VOLTAGE:9-12V
LOW HIGH PASS FILTER
FULL RANGE AMPLIFIER**

ST-500.1 1 OHM

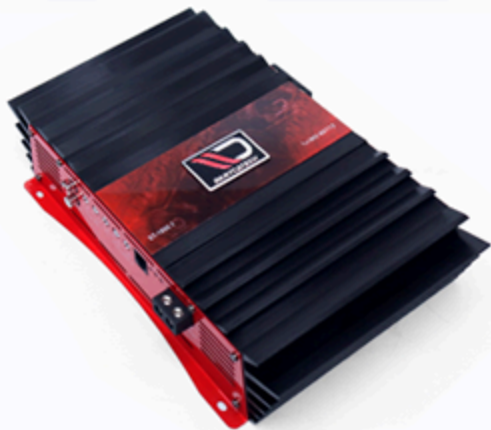


**500 RMS AT 12,5V 1 OHM
1 OHM STABLE LOAD
BASS BOOST:0-12DB
VOLTAGE:9-12V
LOW HIGH PASS FILTER
FULL RANGE AMPLIFIER**



SERIE STRONG

ST-500.1 2 OHM



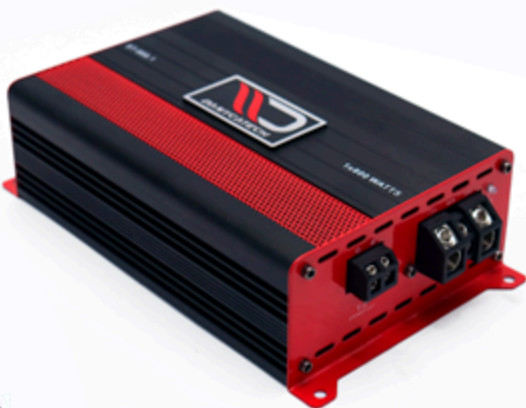
**500 RMS AT 12,5V 2 OHM
2 OHM STABLE LOAD
BASS BOOST:0-12DB
VOLTAGE:9-12V
LOW HIGH PASS FILTER
FULL RANGE AMPLIFIER**

ST-800.1



**800 RMS AT 12,5V 1 OHM
1 OHM STABLE LOAD
BASS BOOST:0-12 DB
VOLTAGE 9-12V
LOW HIGH PASS FILTER
FULL RANGE AMPLIFIER**

ST-800.4

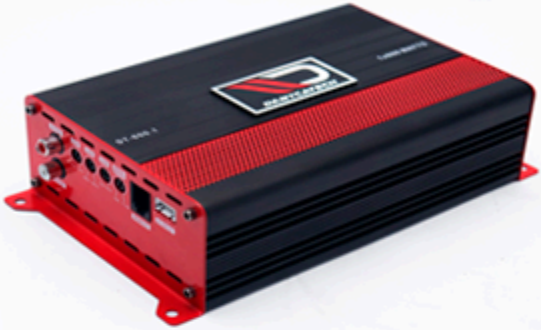


**200 RMS EACH CHANNEL
AT 12,5V 2 OHM
2 OHM STABLE LOAD
BASS BOOST:0-12 DB
VOLTAGE:9-12V
LOW HIGH PASS FILTER
FULL RANGE AMPLIFIER**



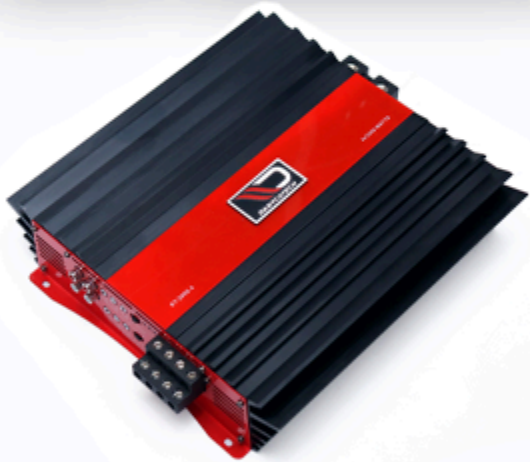
SERIE STRONG

ST-1000.4



**250 RMS EACH CHANNEL
AT 12,5V 2 OHM
2 OHM STABLE LOAD
BASS BOOST:0-12DB
VOLTAGE:9-12V
LOW HIGH PASS FILTER
FULL RANGE AMPLIFIER**

ST-2000.4



**500 RMS AT 12,5V 2
OHM
2 OHM STABLE LOAD
BASS BOOST:0-12DB
VOLTAGE:9-12V
LOW HIGH PASS FILTER
FULL RANGE AMPLIFIER**

ST-1000.1 1 OHM

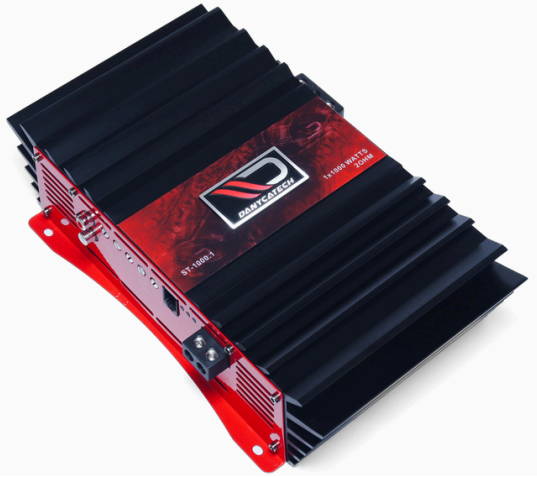


**1200 RMS AT 12,5V 1 OHM
1 OHM STABLE LOAD
BASS BOOST:0-12DB
VOLTAGE:9-12V
LOW HIGH PASS FILTER
FULL RANGE AMPLIFIER**



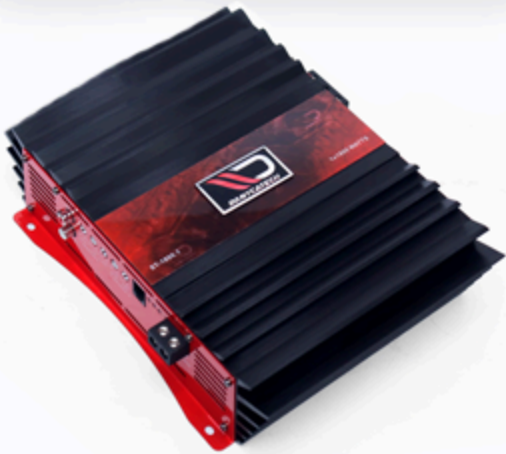
SERIE STRONG

ST-1000.1 2 OHM



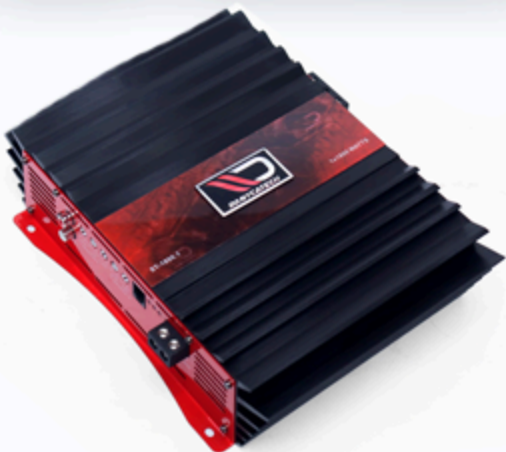
**1200 RMS AT 12,5V 2 OHM
2 OHM STABLE LOAD
BASS BOOST:0-12DB
VOLTAGE:9-12V
LOW HIGH PASS FILTER
FULL RANGE AMPLIER**

ST-1800.1 1 OHM



**1800 RMS AT 12,5V 1 OHM
1 OHM STABLE LOAD
BASS BOOST:0-12DB
VOLTAGE:9-12V
LOW HIGH PASS FILTER
FULL RANGE AMPLIER**

ST-1800.1 2 OHM



**1800 RMS AT 12,5V 2 OHM
2 OHM STABLE LOAD
BASS BOOST:0-12DB
VOLTAGE:9-12V
LOW HIGH PASS FILTER
FULL RANGE AMPLIER**



SERIE STRONG

ST-2500.1 1 OHM



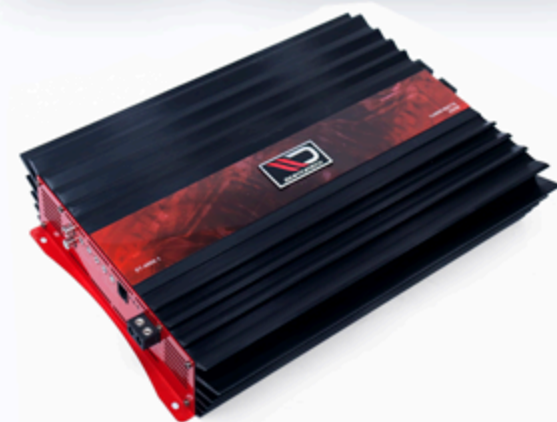
**2500 RMS AT 12,5V 1 OHM
1 OHM STABLE LOAD
BASS BOOST:0-12DB
VOLTAGE:9-12V
LOW HIGH PASS FILTER
FULL RANGE AMPLIER**

ST-2500.1 2 OHM



**2500 RMS AT 12,5V 2 OHM
2 OHM STABLE LOAD
BASS BOOST:0-12DB
VOLTAGE:9-12V
LOW HIGH PASS FILTER
FULL RANGE AMPLIER**

ST-4000.1 1 OHM

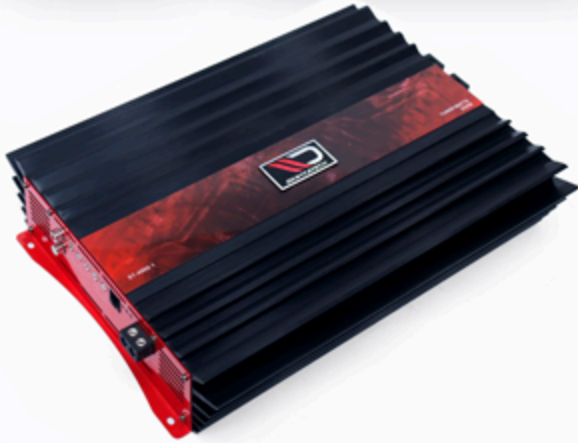


**4000 RMS AT 12,5V 1 OHM
1 OHM STABLE LOAD
BASS BOOST:0-12DB
VOLTAGE:9-12V
LOW HIGH PASS FILTER
FULL RANGE AMPLIER**



SERIE STRONG

ST-4000.1 2 OHM



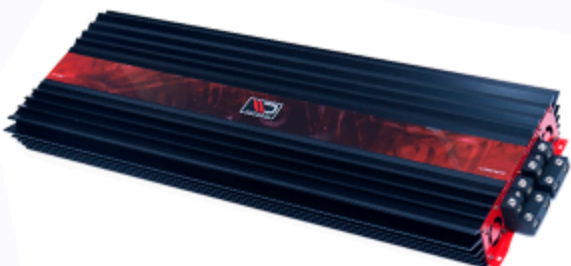
**4000 RMS AT 12,5V 2 OHM
2 OHM STABLE LOAD
BASS BOOST:0-12DB
VOLTAGE:9-12V
LOW HIGH PASS FILTER
FULL RANGE AMPLIFIER**

ST-8000.1



**8000 RMS AT 12,5V 1 OHM
1 OHM STABLE LOAD
BASS BOOST:0-12DB
VOLTAGE:9-12V
LOW HIGH PASS FILTER
FULL RANGE AMPLIFIER**

ST-12000.1



**12.000 RMS AT 12,5V 1
OHM
1 OHM STABLE LOAD
BASS BOOST:0-12DB
VOLTAGE:9-12V
LOW HIGH PASS FILTER
FULL RANGE AMPLIFIER**



SERIE STRONG

ST-15000.1



**15.000 RMS AT 12,5V 1
OHM
1 OHM STABLE LOAD
BASS BOOST:0-12DB
VOLTAGE:9-12V
LOW HIGH PASS FILTER
FULL RANGE AMPLIFIER**

ST-2.8 DSP



**DIGITAL SIGNAL
PROCESSOR
2 IN
8 OUT
DIGITAL SCREEN
MAIN CONTROL**

ST-S8 BT



**DIGITAL SIGNAL
PROCESSOR
4 IN
8 OUT
31 BANDAS POR CANAL
BLUETOOTH
SECUENCIADORES**



SERIE STRONG

ST-M64ND



UND

6.5 INCH
200 RMS
800 WATTS MAX
4 OHM
150-10K HZ
MAGNET NEO
VOICE COIL 1.75 INCH

ST-M84ND



UND

8 INCH
250 RMS
1000 WATTS MAX
4 OHM
100-8K HZ
MAGNET NEO
VOICE COIL 2 INCH

ST-MND-64



UND

6.5 INCH
250 RMS
1000 WATTS MAX
4 OHM
90-8K HZ
MAGNET NEO
VOICE COIL 2 INCH



SERIE STRONG

ST-MND-68



UND

6.5 INCH
250 RMS
1000 WATTS MAX
8 OHM
90-8K HZ
MAGNET NEO
VOICE COIL 2 INCH

ST-MFR 84-PRO



UND

8 INCH
300 RMS
1200 WATTS MAX
4 OHM
90-5K HZ
MAGNET 56 OZ
VOICE COIL 2 INCH

ST-MFR 88-PRO



UND

8 INCH
300 RMS
1200 WATTS MAX
8 OHM
90-5K HZ
MAGNET 56 OZ
VOICE COIL 2 INCH



SERIE STRONG

ST-8NEO



UND

**8 INCH
500 RMS
2000 WATTS MAX
8 OHM
250-5K HZ
MAGNET NEO
VOICE COIL 2.5 INCH**

ST-MB5004



UND

**8 INCH
500 RMS
2000 WATTS MAX
4 OHM
50-6K HZ
MAGNET 60 OZ
VOICE COIL 3 INCH**

ST-MB5008



UND

**8 INCH
500 RMS
2000 WATTS MAX
8 OHM
50-6K HZ
MAGNET 60 OZ
VOICE COIL 3 INCH**



SERIE STRONG

ST-MFR-104



UND

10 INCH
400 RMS
1600 WATTS MAX
4 OHM
80-5K HZ
MAGNET 80 OZ
VOICE COIL 3 INCH

ST-MFR-108



UND

10 INCH
400 RMS
1600 WATTS MAX
8 OHM
80-5K HZ
MAGNET 80 OZ
VOICE COIL 3 INCH

ST-MB-104



UND

10 INCH
650 RMS
1300 WATTS MAX
4 OHM
75-5K HZ
MAGNET 92 OZ
VOICE COIL 3.5 INCH



SERIE STRONG

ST-MB-10B



UND

10 INCH
650 RMS
1300 WATTS MAX
8 OHM
75-5K HZ
MAGNET 92 OZ
VOICE COIL 3.5 INCH

ST-12MB800



UND

12 INCH
800 RMS
1600 WATTS MAX
8 OHM
65-5K HZ
MAGNET 93 OZ
VOICE COIL 3.5 INCH

ST-12MB2K



UND

12 INCH
1000 RMS
2000 WATTS MAX
8 OHM
60-4K HZ
MAGNET 150OZ
VOICE COIL 4 INCH



SERIE STRONG

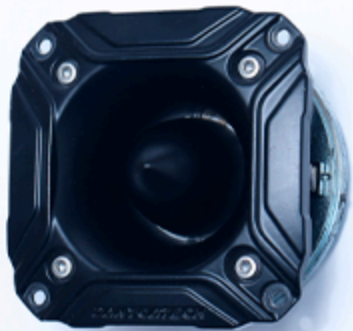
ST-MB-158



UND

15 INCH
1500 RMS
3000 WATTS MAX
8 OHM
40-3K HZ
MAGNET 165 OZ
VOICE COIL 4.5 INCH

ST-TWO1ND-PRO



UND

4 INCH
250 RMS
500 WATTS MAX
4 OHM
3-20K HZ
MAGNET 90*4 MM
VOICE COIL 1.5 INCH

ST-001



2 INCH THROAT
120 RMS
240 WATTS MAX
8 OHM
1K-18K HZ
MAGNET NEO
VOICE COIL 3 INCH



SERIE STRONG

ST-003-TN



**2 INCH THROAT
8 OHM
TITANIUM
MAGNET FERRITE
VOICE COIL 3 INCH**

ST-03.5



**2 INCH THROAT
8 OHM
POLYESTER DIAPHRAGM
MAGNET FERRITE
VOICE COIL 3.5 INCH**

ST-004TN



**2 INCH THROAT
8 OHM
TITANIUM
MAGNET NEO
VOICE COIL 4 INCH**



SERIE STRONG

ST-002+



**4 INCH
1000 RMS
2000 WATTS MAX
2X4/2X8 OHM
200-90K HZ
MAGNET NEO
VOICE COIL 2X3.75 INCH**

ST-H001



**DIFUSOR METAL
THROAT 2 INCH**



SERIE ENERGY



SERIE ENERGY

EN-REV CAMERA



COMOS REVERSE CAMERA
CHIP $\frac{1}{3}$ PC7440
ANGLE 120 DEGREES
RESOLUTION 420 TVL
LIGHT ILLUMINATION 0.1 LUX
VOLTAGE 12V
WATERPROOF INDEX: IP67
SIZE: 18.5 MM

EN-1200.1D



CLASS D AMPLIFIER
300W X 1CH AT 2 OHM
LPF:40HZ-250 HZ
SUBSONC OFF-50HZ
SENSITIVITY 200 MV
BASS BOOST:0 DB -12 DB
VOLTAGE:9-12V
FREQUENCY:20 HZ-320 HZ
S/N RATIO:>90DB

EN-1800.1D



CLASS D AMPLIFIER
600W X 1CH AT 1 OHM
LPF:40HZ-250 HZ
SUBSONC OFF-50HZ
SENSITIVITY 200 MV
BASS BOOST:0 DB -12 DB
VOLTAGE:9-12V
FREQUENCY:20 HZ-320 HZ
S/N RATIO:>90DB



SERIE ENERGY

NUVEVO

EN-2000.1



**CLASS D AMPLIFIER
1X600RMS X 1CH AT 10HM
FREQUENCY 20HZ-20KHZ
HPF 10HZ-8KHZ
LPF 50HZ-8KHZ
BASS BOOST 0DB - 12DB
THD+N 0.2
SPEAKER CABLE 8GA
POWER CABLE 4GA**

EN-2400.4



**CLASS D AMPLIFIER
150 X 4CH AT 20HM
FREQUENCY 20HZ-20KHZ
HPF 10HZ-8KHZ
LPF 50HZ-8KHZ
BASS BOOST 0DB - 12DB
THD+N 0.2
SPEAKER CABLE 8GA
POWER CABLE 4GA**



SERIE ENERGY

EN-1800.4D



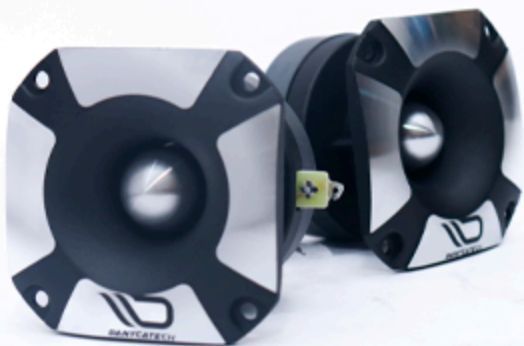
CLASS D AMPLIFIER
80W X 4CH AT 2 OHM
LPF:40HZ-250 HZ
HPF: 40 HZ - 2KHZ
SUBSONC OFF-50HZ
SENSITIVITY 200 MV
BASS BOOST:0 DB -15 DB
VOLTAGE:9-12V
FREQUENCY:30 HZ-20K HZ
S/N RATIO:>90DB

EN-1800.5



80W X 4CH AT 4 OHM
+ 300RMS X 1CH AT 2 OHM
LPF:50HZ-150 HZ
HPF: 40 HZ - 250KHZ
SUBSONC OFF-50HZ
SENSITIVITY 200 MV
BASS BOOST: 0DB -15 DB
VOLTAGE:9-12V
FREQUENCY:30 HZ-20K HZ

EN-TWO15



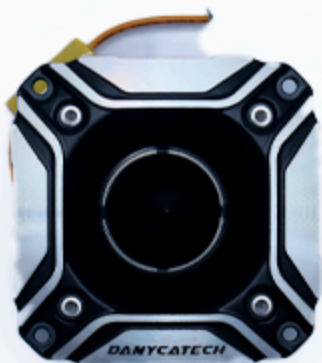
PAR

3,5 INCH
100 RMS
200 WATTS MAX
4 OHM
3K-20K HZ
MAGNET 12 OZ
VOICE COIL 1 INCH



SERIE ENERGY

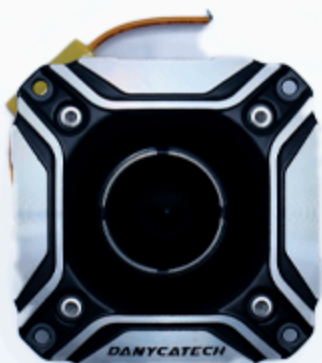
EN-TW03 4 OHM



UND

4 INCH
250 RMS
500 WATTS MAX
4 OHM
3K-20K HZ
MAGNET 18 OZ
VOICE COIL 1,5 INCH

EN-TW03 8 OHM



UND

4 INCH
250 RMS
500 WATTS MAX
8 OHM
3K-20K HZ
MAGNET 18 OZ
VOICE COIL 1,5 INCH

EN-SL 6.5



PAR

6,5 INCH
150 RMS
600 WATTS MAX
4 OHM
120-8000 HZ
MAGNET 17 OZ
VOICE COIL 1,5 INCH



SERIE ENERGY

EN-MT 64



PAR

**6,5 INCH
200 RMS
800 WATTS MAX
4 OHM
120-20K HZ
MAGNET 17 OZ
VOICE COIL 1,5 INCH**

EN-MD68-PRO



UND

**6,5 INCH
250 RMS
1100 WATTS MAX
8 OHM
350-12K HZ
MAGNET 44 OZ
VOICE COIL 1,75 INCH**



SERIE ENERGY

EN-MFL 64



PAR

6,5 INCH
150 RMS
600 WATTS MAX
4 OHM
115-13.000 HZ
MAGNET 20 OZ
VOICE COIL 1,5 INCH

EN-M064



PAR

6,5 INCH
180 RMS
720 WATTS MAX
4 OHM
120-8K HZ
MAGNET 20 OZ
VOICE COIL 1,5 INCH

EN-M084



PAR

8 INCH
300 RMS
1200 WATTS MAX
4 OHM
115-6K HZ
MAGNET 30 OZ
VOICE COIL 1,5 INCH



SERIE ENERGY

EN-6MR300



UND

6,5 INCH
150 RMS
300 WATTS MAX
4 OHM
110-9K HZ
MAGNET 24 OZ
VOICE COIL 1,5 INCH

EN-8MR300



UND

8 INCH
150 RMS
300 WATTS MAX
4 OHM
110-8.5 K HZ
MAGNET 24 OZ
VOICE COIL 1,5 INCH

EN-SFL10



UND

10 INCH
200 RMS
500 WATTS MAX
4 OHM
37-500 HZ
MAGNET 32 OZ
VOICE COIL 2 INCH



SERIE ENERGY

EN-SFL12



UND

12 INCH
300 RMS
600 WATTS MAX
4 OHM
31-500 HZ
MAGNET 32 OZ
VOICE COIL 2 INCH

EN-SFL10-PRO



UND

10 INCH
500 RMS
1000 WATTS MAX
SINGLE 4 OHM
45-1K HZ
VOICE COIL 2 INCH

EN-SFL12-PRO



UND

12 INCH
500 RMS
1000 WATTS MAX
SINGLE 4 OHM
45-1K HZ
VOICE COIL 2 INCH



SERIE ENERGY

EN-S300-S4



**12 INCH
300 RMS
600 WATTS MAX
SINGLE 4 OHM
45-500 HZ
MAGNET 80 OZ
VOICE COIL 2 INCH**

EN-S300-D4



**12 INCH
300 RMS
600 WATTS MAX
SINGLE 4 OHM
45-500 HZ
MAGNET 80 OZ
VOICE COIL 2 INCH**

EN-S500 D2



**12 INCH
500 RMS
1000 WATTS MAX
DOUBLE 2 OHM
MAGNET 100 OZ
VOICE COIL 2.5 INCH**



SERIE ENERGY

EN-5500-04



**12 INCH
500 RMS
1000 WATTS MAX
DOUBLE 4 OHM
MAGNET 100 OZ
VOICE COIL 2.5 INCH**

EN-61204



**12 INCH
600 RMS
1200 WATTS MAX
DOUBLE 4 OHM
MAGNET 120 OZ
VOICE COIL 2.5 INCH**

EN-61504



**15 INCH
600 RMS
1200 WATTS MAX
DOUBLE 4 OHM
MAGNET 120 OZ
VOICE COIL 2.5 INCH**



SERIE ENERGY

EN-HR6.5



**PLASTIC HORN
6.5 INCH**

EN-HR8



**PLASTIC HORN
8 INCH**

EN-KIT 0



**OGA FLEXIBLE BLUE POWER CABLE CCA 5.2M
OGA FLEXIBLE BLACK POWER CCA 0.9M
2 PCS FLEXIBLE RCA 5.2M
SPEAKER CABLE 18GA 5.2M
REMOTE CABLE BLUE 5.2M
TUBE 1.8M
AFS- FUSE HOLDER WITH 250A FUSE
ACCESSORY**



SERIE ENERGY

EN-KIT 8



8GA FLEXIBLE BLUE POWER CABLE CCA 5.2M
8GA FLEXIBLE BLACK POWER CCA 0.9M
1 PCS FLEXIBLE RCA 5.2M
SPEAKER CABLE 18GA 5.2M
REMOTE CABLE BLUE 5.2M
TUBE 1.8M
AFS- FUSE HOLDER WITH 80A FUSE
ACCESSORY

EN-YEE 2M1F



YEE RCA 2M-1F

EN-YEE 1M2F



YEE RCA 1M-2F



SERIE ENERGY

EN-RCA 3FT



**RCA 3FT
RCA 1MT**

EN-RCA 6FT



**RCA 6FT
RCA 2MT**

EN-RCA 10FT



**RCA 10FT
RCA 3MT**



SERIE ENERGY

EN-RCA 15FT



RCA 15FT
RCA 5MT

EN-RCA 17FT



RCA 17FT
RCA 6MT

EN-RCA 20FT



RCA 20FT
RCA 7MT



SERIE ENERGY

EN-CW0BL



**CABLE DE CORRIENTE NUMERO 0 AZUL
CCA - 15 MTS**

EN-CW4-RED



**CABLE DE CORRIENTE NUMERO 4 ROJO
CCA - 30 MTS**

EN-CW4-BK



**CABLE DE CORRIENTE NUMERO 4 NEGRO
CCA - 30 MTS**



SERIE ENERGY

EN-CW8-RED



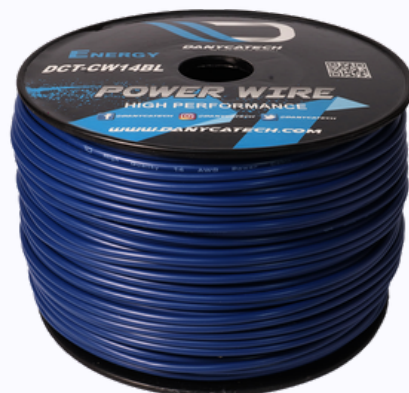
**CABLE DE CORRIENTE NUMERO 8 ROJO
CCA - 76 MTS**

EN-CW8-BK



**CABLE DE CORRIENTE NUMERO 8 NEGRO
CCA - 76 MTS**

EN-CW14-BL



**CABLE DE CORRIENTE NUMERO 14 REMOTO
AZUL
CCA - 152 MTS**



SERIE ENERGY

EN-SW 12



**CABLE DE PARLANTE NUMERO 12 AZUL Y GRIS
CCA - 152 MTS**

EN-SW 14



**CABLE DE PARLANTE NUMERO 14 AZUL Y GRIS
CCA - 152 MTS**

EN-SW 16



**CABLE DE PARLANTE NUMERO 16 AZUL Y GRIS
CCA - 152 MTS**



SERIE ENERGY

EN-SW 18



**CABLE DE PARLANTE NUMERO 18 AZUL Y GRIS
CCA - 152 MTS**

REJ-6.5



REJILLA PLASTICA 6.5 INCH

REJ 8



**REJILLA PLASTICA
8 INCH**



DANYCATECH

SERIE
ENJOY



SERIE ENJOY

NUJEVO

EJ-1200.1



**1200X1 CH
600 RMS X CHANNEL
20HZ - 20KHZ
HPF 120-3KHZ
LPF 50-250HZ
BASS BOOST 0/6/12 DB
THD +N 0.1**

EJ-1600.5



**1600X5 CH WATTS
60 RMS X CHANNEL +335 X 1 CH AT 4 OHM
20HZ - 20KHZ
HPF 120-3KHZ
LPF 50-250HZ
BASS BOOST 0/6/12 DB
THD +N 0.1**



SERIE ENJOY

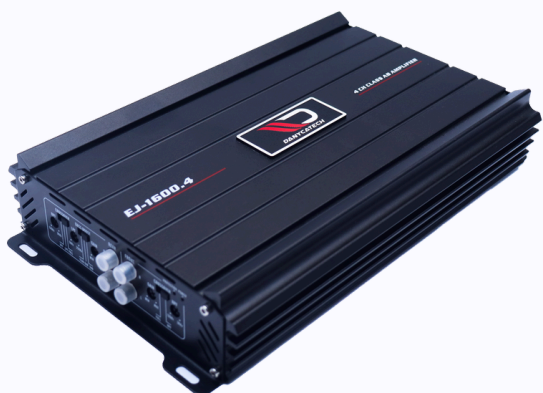
NUVEVO

EJ-1800.1



**1800X1 CH WATTS
1000 RMS X CHANNEL
20HZ - 20KHZ
HPF 120-3KHZ
LPF 50-250HZ
BASS BOOST 0/6/12 DB
THD +N 0.1**

EJ-2000.4



**2000X4 CH WATTS
120 RMS X CHANNEL
20HZ - 20KHZ
HPF 120-3KHZ
LPF 50-250HZ
BASS BOOST 0/6/12 DB
THD +N 0.1**



SERIE ENJOY

EJ-1600.4



1600X4 CH WATTS
80 RMS X CHANNEL
20HZ - 20KHZ
HPF 120-3KHZ
LPF 50-250HZ
BASS BOOST 0/6/12 DB
THD +N 0.1

EJ-KIT 4



4GA FLEXIBLE BLUE POWER CABLE CCA 5.2M
4GA FLEXIBLE BLACK POWER CCA 0.9M
2 PCS FLEXIBLE RCA 5.2M
SPEAKER CABLE 18GA 5.2M
REMOTE CABLE BLUE 5.2M
TUBE 1.8M
AFS- FUSE HOLDER WITH 250A FUSE
ACCESSORY

EJ-TW01-PRO



3 INCH
250 RMS
500 WATS MAX
4 OHM
SENSITIVITY 110 DB
VOICE COIL 1,5 INCH



SERIE ENJOY

EJ-235 BT



VOLTAJE: 12V
PANEL DESMONTABLE
CONTROL REMOTO
BT
USB
AUXILIAR
MICRO SD
2 SALIDAS RCA
SALIDAS 50X4

EJ-S4



COAXIAL
100 WATTS
80-20KHZ
MAGNET 6 OZ
VC: 1 INCH
SENSITIVITY: 88 DB

EJ-S 525



COAXIAL
100 WATTS
80-20KHZ
MAGNET 10 OZ
VC: 1 INCH
SENSITIVITY: 88 DB



SERIE ENJOY

EJ-S65



COAXIAL
100 WATTS
80-20KHZ
MAGNET 10 OZ
VC: 1 INCH
SENSITIVITY: 88 DB

EJ-S200



12 INCH
200 RMS
400 WATS MAX
4 OHM
MAGNET 40 OZ
VOICE COIL 2 INCH

EJ-M84



8 INCH
250 RMS
1000 WATS MAX
4 OHM
MAGNET 27 OZ
VOICE COIL 1.5 INCH
SENSITIVITY: 93.5 DB



DANYCATECH

DIFUSORES

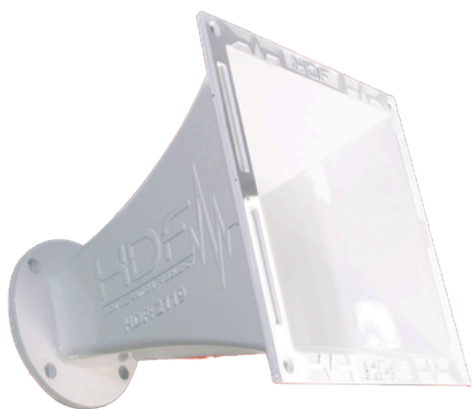


HDF-1420 TI



**EXPANSOR HDF BRASILEIRO
DRIVER 2 PULG
PARA DRIVER TITANIO**

HDF-2119 FE



**EXPANSOR HDF BRASILEIRO
DRIVER 2 PULG
PARA DRIVER FENOLICO**

GVM-T750 TI



**EXPANSOR HDF BRASILEIRO
DRIVER 2 PULG
PARA DRIVER TITANIO**



GVM 2375 FE



**EXPANSOR HDF BRASILEIRO
DRIVER 2 PULG
PARA DRIVER FENOLICO**

GVM-T775



**EXPANSOR HDF BRASILEIRO
DRIVER 2 PULG
PARA DRIVER TITANIO Y FENOLICO**



DANYCATECH

**FUENTES
Y
CARGADORES**



FUENTES USINA

FUENTE CONNECT 12V 70A



BIVOLT AUTOMÁTICO
AC 127VCA: 100 @ 140VCA
AC 220VCA: 170 @ 250VCA 15A (MÁXIMO)
8A (MÁXIMO) 12V @ 16VCC (+-1%)
CORRENTE DE SAÍDA: 70A @ 12,5VCC (+-5%)*
POTÊNCIA DE SAÍDA: 875 WATTS (MÁXIMA)**
RENDIMENTO: 85%
ENTRADA: 1075 WATTS (MÁXIMA)**
CABO DE ENTRADA: 3X1,5MM² - 2P+T
PROTEÇÃO DE ENTRADA: DISJUNTOR 16A
CABO DE SAÍDA: 16MM²
2,5MM² (MÁX 30 METROS)
PESO: 1,950 KG

FUENTE CONNECT 12V 120A



BIVOLT AUTOMÁTICO
AC 127VCA: 100 @ 140VCA
AC 220VCA: 170 @ 250VCA 23A (MÁXIMO)
CONSUMO 220VCA: 13A (MÁXIMO)
TENSÃO DE SAÍDA: 12V @ 16VCC (+-1%)
CORRENTE DE SAÍDA: 120A @ 12,5VCC (+-5%)*
POTÊNCIA DE SAÍDA: 1500 WATTS (MÁXIMA)**
POTÊNCIA DE ENTRADA: 1800 WATTS (MÁXIMA)**
CABO DE ENTRADA: 3X1,5MM² - 2P+T
PROTEÇÃO DE ENTRADA: DISJUNTOR 25A
EXTENSÃO RECOMENDADA: 2,5MM² (MÁX 30 METROS)
PESO: 2,400 KG

FUENTE CONNECT 12V 150A



AC 127VCA: 100 @ 140VCA
AC 220VCA: 170 @ 250VCA 33A (MÁXIMO)
CONSUMO 220VCA: 17A (MÁXIMO)
TENSÃO DE SAÍDA: 12V @ 16VCC (+-1%)
CORRENTE DE SAÍDA: 150A @ 12,5VCC (+-5%)*
POTÊNCIA DE SAÍDA: 1875 WATTS (MÁXIMA)**
POTÊNCIA DE ENTRADA: 2400 WATTS (MÁXIMA)**
CABO DE ENTRADA: 3X1,5MM² - 2P+T
PROTEÇÃO DE ENTRADA: DISJUNTOR 32A
CABO DE SAÍDA: 35MM² 4MM² (MÁX 30 METROS)
PESO: 2,900 KG



FUENTES USINA

FUENTE CONNECT 12V 200A



BIVOLT AUTOMÁTICO 100 @ 140VCA
170 @ 250VCA
CONSUMO 127VCA: 36A (MÁXIMO)
CONSUMO 220VCA: 21A (MÁXIMO)
TENSÃO DE SAÍDA: 12V @ 16VCC (+-1%)
CORRENTE DE SAÍDA: 200A @ 12,5VCC (+-5%)*
POTÊNCIA DE SAÍDA: 2500 WATTS (MÁXIMA)**
POTÊNCIA DE ENTRADA: 2980 WATTS (MÁXIMA)**
CABO DE ENTRADA: 3X2,5MM² - 2P+T
PROTEÇÃO DE ENTRADA: DISJUNTOR 32A
4MM² (MÁX 30 METROS)
PESO: 3,500 KG

CENTRAL FUENTE SMART CONNECT



CENTRAL DE CONTROL PARA FUENTE SMART CONNECT

SBM-12V 70 AMP



AC 127VCA: 100 @ 140VCA
AC 220VCA: 170 @ 250VCA
CONSUMO 127VCA: 15A (MÁXIMO)
CONSUMO 220VCA: 8A (MÁXIMO)
TENSÃO DE SAÍDA: 12,5V @ 14,4VCC (+-1%)
CORRENTE DE SAÍDA: 70A @ 12,5VCC (+-5%)*
POTÊNCIA DE SAÍDA: 875 WATTS (MÁXIMA)**
POTÊNCIA DE ENTRADA(V.A): 1400V.A
POTÊNCIA DE ENTRADA(W): 1075 WATTS MAX
CABO DE ENTRADA: 3X1,5MM² - 2P+T
PROTEÇÃO DE ENTRADA: DISJUNTOR 16A
2,5MM² (MÁX 30 METROS)
PESO: 1,950 KG



FUENTES USINA

SBM-12V 120 AMP



AC 127VCA: 100 @ 140VCA
AC 220VCA: 170 @ 250VCA
CONSUMO 127VCA: 23A (MÁXIMO)
CONSUMO 220VCA: 13A (MÁXIMO)
TENSÃO DE SAÍDA: 12V @ 14,4VCC (+-1%)
CORRENTE DE SAÍDA: 120A @ 12,5VCC (+-5%)*
POTÊNCIA DE SAÍDA: 1500 WATTS (MÁXIMA)**
POTÊNCIA DE ENTRADA (V.A): 2400V.A
1800 WATTS (MÁXIMA)
CABO DE ENTRADA: 3X1,5MM² - 2P+T
PROTEÇÃO DE ENTRADA: DISJUNTOR 25A
2,5MM² (MÁX 30 METROS)
PESO: 2,400 KG

SBM-12V 150 AMP



AC 127VCA: 100 @ 140VCA
AC 220VCA: 170 @ 250VCA
CONSUMO 127VCA: 33A (MÁXIMO)
CONSUMO 220VCA: 17A (MÁXIMO)
TENSÃO DE SAÍDA: 12V @ 14,4VCC (+-1%)
CORRENTE DE SAÍDA: 150A @ 12,5VCC (+-5%)*
POTÊNCIA DE SAÍDA: 2000 WATTS (MÁXIMA)**
POTÊNCIA DE ENTRADA (V.A): 3000V.A
POTÊNCIA DE ENTRADA: 2400 WATTS (MÁXIMA)**
CABO DE ENTRADA: 3X2,5MM² - 2P+T
PROTEÇÃO DE ENTRADA: DISJUNTOR 32A
4MM² (MÁX 30 METROS)
PESO: 2,900 KG

SBM-12V 200 AMP



AC 127VCA: 100 @ 140VCA
AC 220VCA: 170 @ 250VCA
CONSUMO 127VCA: 36A (MÁXIMO)
CONSUMO 220VCA: 21A (MÁXIMO)
TENSÃO DE SAÍDA: 12 @ 14,4VCC (+-1%)
CORRENTE DE SAÍDA: 200A @ 12,5VCC (+-5%)*
POTÊNCIA DE SAÍDA: 2500 WATTS (MÁXIMA)**
POTÊNCIA DE ENTRADA (V.A): 3900V.A
POTÊNCIA DE ENTRADA: 2980 WATTS (MÁXIMA)**
CABO DE ENTRADA: 3X2,5MM² - 2P+T
CABO DE SAÍDA: 50MM²
4MM² (MÁX 30 METROS)
PESO: 3,500 KG



INVERSOR

600W 12V-120V



TENSÃO DE OPERAÇÃO: 10,5 A 16VCC
CORRENTE DE ENTRADA (MÁXIMA)*: 60A
TENSÃO DE SAÍDA: 120VCA / +-3%
CORRENTE DE SAÍDA (NOMINAL/PICO)*: 5,1A / 10,2A
TIPO DE ONDA DE SAÍDA: SENOIDAL PURA
FREQUÊNCIA DE SAÍDA: 60HZ / +-1%
POTÊNCIA DE SAÍDA (MÁXIMA CONTÍNUA): 600 WATTS**